



## Training Opportunities

### Foster Care Continuum (FCC) Coffee Talks

We proudly offered eight opportunities to meet with local CWEL's, advocates, and others over the past school year. We will take a break for the month of July but will be back at it in August. Each month we will continue to dedicate a block of time to meet in new communities to discuss real life barriers and possible solutions to increase school stability and overall success for students in foster care. Would you like us to visit your community, click [here](#) to send a request?

### Regional Trainings (Seeking Locations)

The CDE Foster Care Education is looking for school districts, county human services offices, and/or other advocates to host a regional training. This 1.5 to 2.5 hour training is facilitated by our CDE staff for audiences to learn more about the state and federal legislation and guidance to protect the educational rights of students in foster care. Please [click](#) here if you would like us to visit your community.

## Updates and Information

### New Webpage on Foster Care Data

The University of Northern Colorado recently published a website with infographics on educational stability and interactive charts on academic achievement, grade progression, and school changes to help others better understand and use the findings from the Colorado Study of Students in Foster Care.

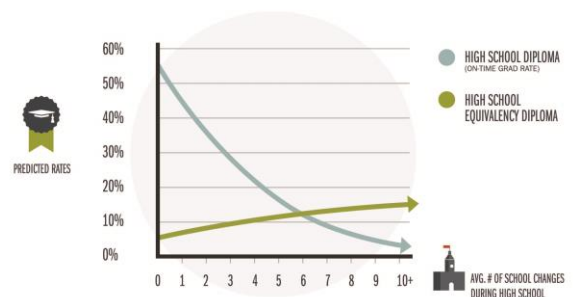
The Colorado research is organized by audience:

- All Stakeholders: Infographics provide a user-friendly overview of how students in foster care are faring in K-12 education and recommendations for how to close gaps.
- Grant Writers and Program Planners: Needs Assessment Data can help you create a case for new resources or prioritize existing resources.
- Systems Changers: Whether you are a policy maker or a practitioner, reports are designed to inform systems-level efforts.

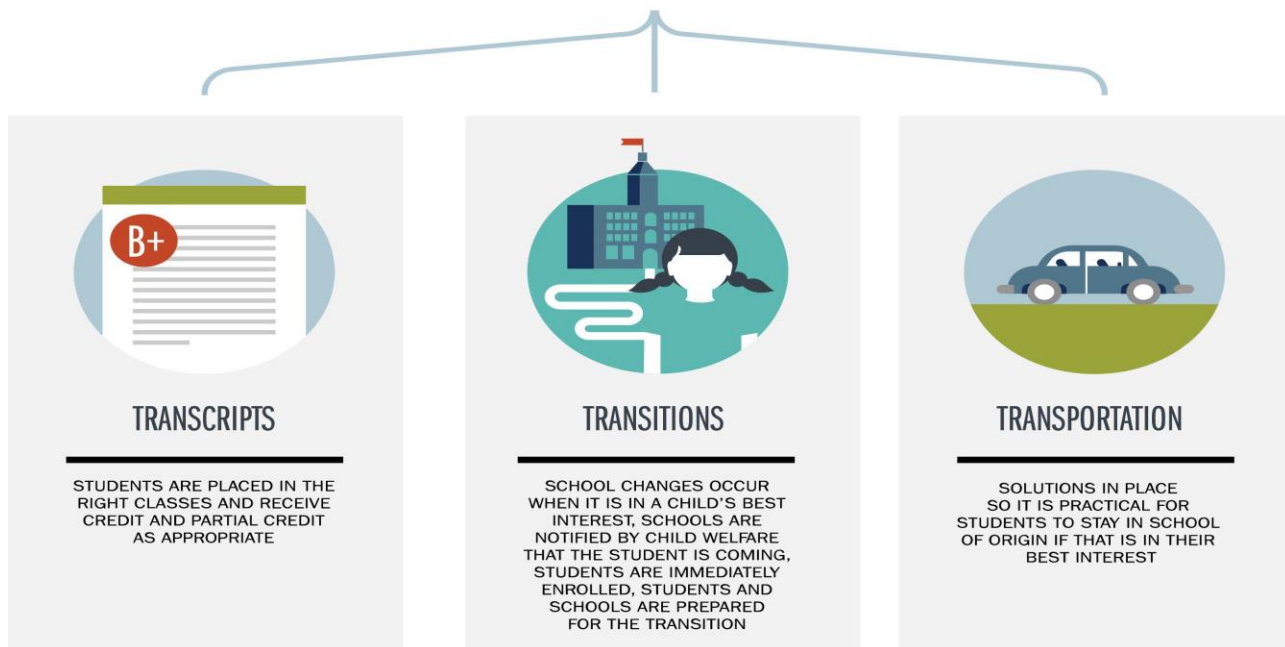
The new report "Every Transition Counts" provides an overview of educational stability of Colorado's students in foster care. Click [here](#) to visit the page. Infographics from the webpage are provided below.

	# OF STUDENTS IN FOSTER CARE	% OF STUDENTS 1+ SCHOOL CHANGE	% OF STUDENTS 3+ SCHOOL CHANGES
2013-14	<b>4440</b>	<b>53.3%</b>	<b>9.0%</b>
2012-13	<b>4398</b>	<b>52.9%</b>	<b>8.0%</b>
2011-12	<b>4593</b>	<b>51.6%</b>	<b>8.2%</b>
2010-11	<b>5093</b>	<b>51.0%</b>	<b>7.4%</b>
2009-10	<b>5523</b>	<b>50.6%</b>	<b>6.9%</b>
2008-09	<b>5816</b>	<b>49.4%</b>	<b>6.4%</b>
2007-08	<b>5865</b>	<b>50.8%</b>	<b>6.0%</b>

NOTE: # OF STUDENTS IS A COUNT OF THOSE ENROLLED BY OCTOBER 1ST. DIFFERS FROM A TOTAL STUDENT COUNT, WHICH INCLUDES STUDENTS WHO ENROLLED THROUGHOUT THE YEAR



## THE 3 T'S



## To learn more about Foster Care Education

- CDE Foster Care Education webpage at [http://www.cde.state.co.us/DropoutPrevention/fostercare\\_index.htm](http://www.cde.state.co.us/DropoutPrevention/fostercare_index.htm)
- Sheree Wheeler , CDE State Coordinator of Foster Care Education, 303-866-6007, [Wheeler\\_S@cde.state.co.us](mailto:Wheeler_S@cde.state.co.us)
- American Bar Association has the Fostering Connections Act of 2008 Implementation Toolkit Improving Education Outcomes for Children and Youth in Foster Care: [www.americanbar.org](http://www.americanbar.org)
- CDE ESSA Blog and Listen tour can be found at: <https://www.cde.state.co.us/fedprograms/essa> Stay tuned to updates on ESSA/Foster Care to come.

